

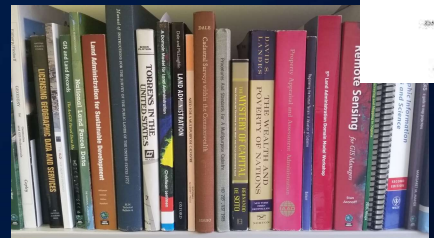
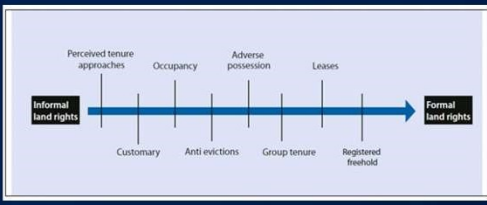
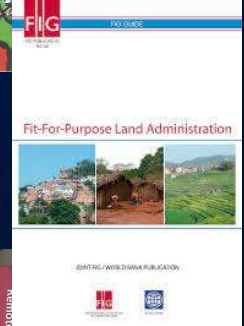
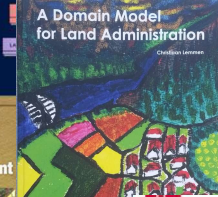
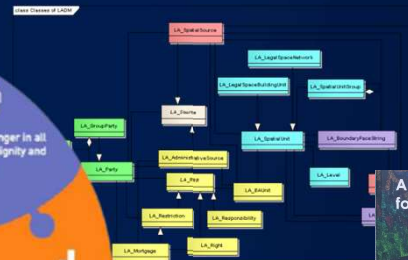
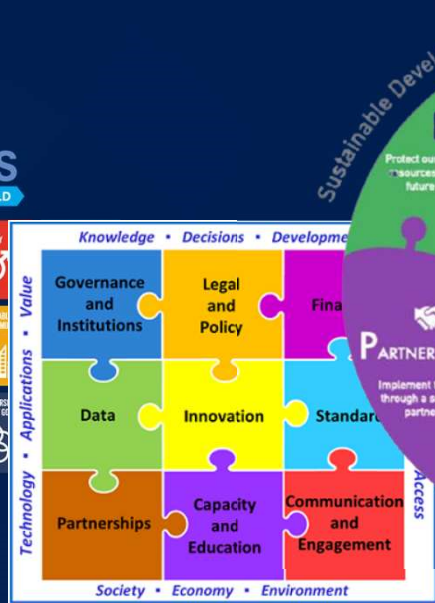


UN-GGIM: Expert Group on Land Administration & Management

*Aligning Technology with
Global Initiatives*

Global Standards, Frameworks, Initiatives, Models, Data.....

The cookbook for modernizing land administration,,,,,



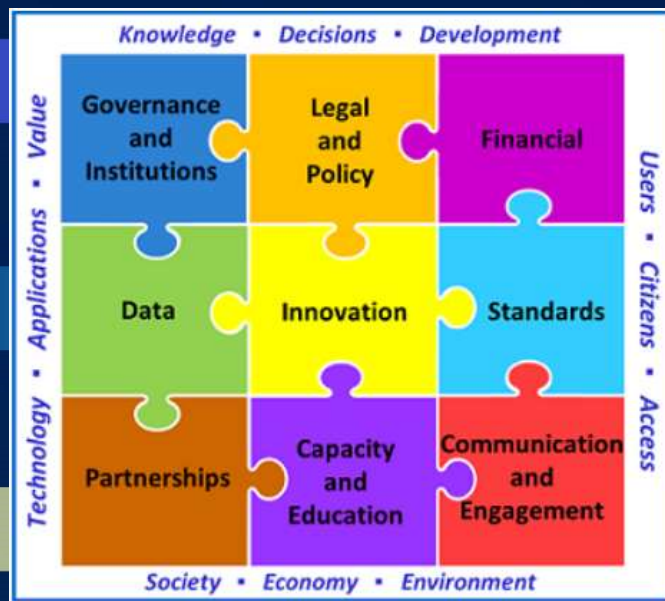
Integrated Geospatial Information Framework


Framework for Effective Land Administration

GOVERNANCE

TECHNOLOGY

PEOPLE



FELA Goals	FELA Requirements	FELA Pathways
Transparency and accountability increased	Accountable and transparent governance	Governance, Institutions and Accountability* 
Gender-responsive and inclusive of vulnerable groups	Inclusive and recognizes all forms of tenure	Policy and Legal 
Affordable investments and economic return assured	Affordable with sustainable business models	Financial 
Reliable data and service quality attained	Data maintained, secure and not duplicated	Data 
Responsible and innovation oriented	Upgradable systems and approaches	Innovation 
Interoperability and integration supported	Considers internationally agreed standards	Standards 
Cooperation, partnerships, and participation leveraged	Strengthens partnerships and supports collaboration	Partnerships 
Capacity, capability, knowledge transfer and exchange attained	Facilitates capacity development and knowledge transfer and exchange	Capacity and Education 
National engagement and communication enhanced	Advocates for effective land administration	Advocacy and Awareness* 

A Framework for Implementing Modern SDI Driving Effective Land Administration....

Strategic Pathway #6

Standards

Open Standards and Formats

WMS GML WCS WWW WFS
IFC SQL Web Scene (I3S)
OPeNDAP SLD SOAP WMTS
LERC JSON LAS CSW WPS
REST WaterML INSPIRE
NetCDF Shapefiles
ISO GeoPackage
OneGeology
CityGML

OGC
Principal Member

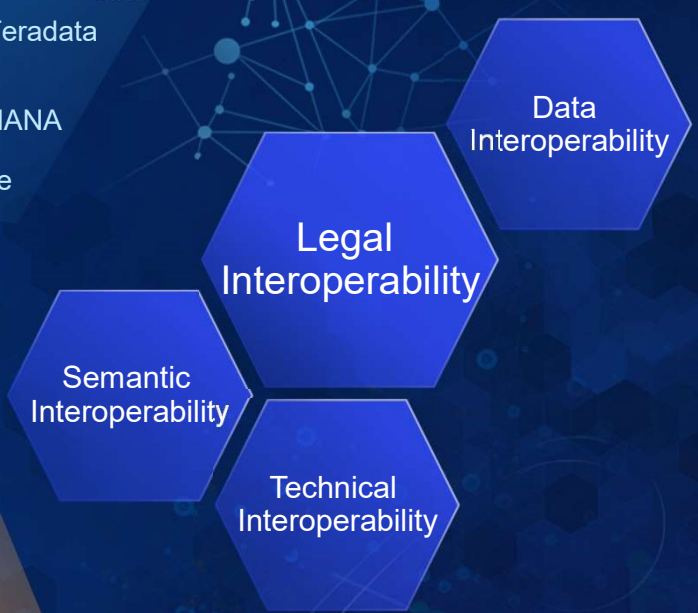
Many OGC Certifications

Systems Integration

MS Office
Adobe Creative Cloud SharePoint
SQL Server Azure Jupyter Notebooks
Power BI Netezza Teradata
AWS Python R
AutoCAD IBM Cognos SAP HANA
Oracle

Open Software

Open Data Access
Open APIs & SDKs
Extensible Architecture
Embeddable Components
Open-Source Contributions (500+)
Open-Source Integration



Strategic Pathway #4

Data

Data Acquisition and Management:

Data Agnostic

*Multiple Data Collection Pathways
(mobile, drone, imagery, GeoAI, etc.)*

Industry Templates, Data Models, & Workflows

Open Data

Data Access:

Living Atlas of the World

- *Global Base Maps*
- *Imagery*
- *Demographic Data*



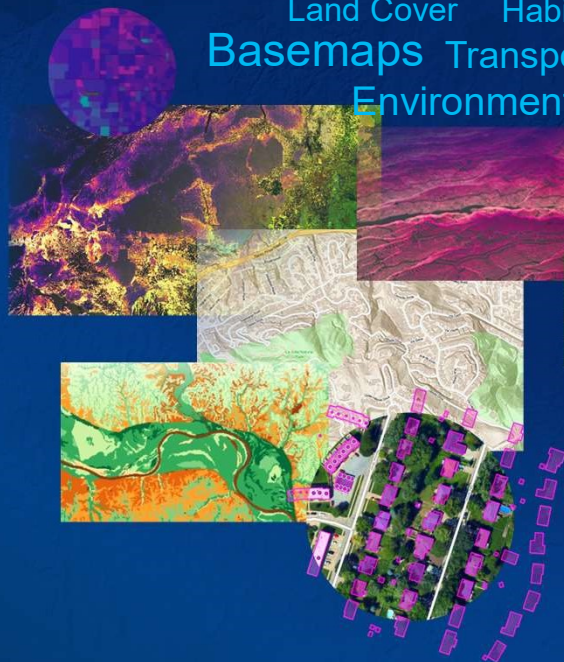
Infrastructural Data

Fundamental Data Themes



Global Maps and Data

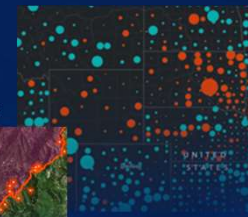
Living Atlas



Land Cover Habitats Biodiversity
Basemaps Transportation Landscape
Environment Movement Infrastructure
Hydro Traffic Business
Elevation Boundaries
Demographics Imagery
POI Oceans Hazards
Weather Soils
Authoritative
Community Content

- Thousands of High-Quality Maps, Layers and Datasets
- Updated Regularly
- Billions of Requests Daily

Monthly Unemployment Statistics (BLS)



Real-Time Observations



OpenStreetMap Layers

*Global & Local Geographic Content . . .
About Everything*

Strategic Pathway #5

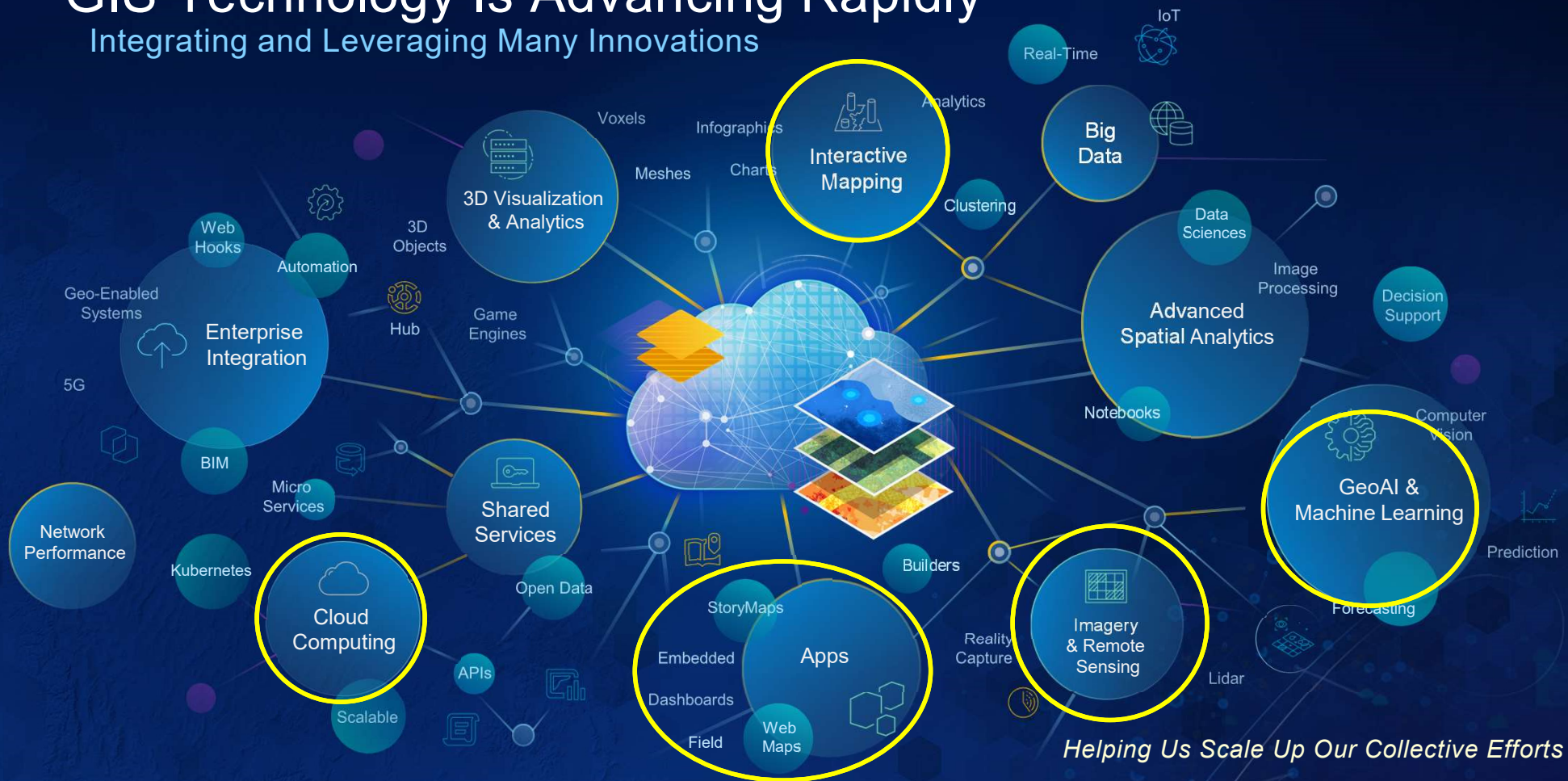
Innovation

GIS enables many innovations....



GIS Technology Is Advancing Rapidly

Integrating and Leveraging Many Innovations



Helping Us Scale Up Our Collective Efforts

What's Coming!

Continuously growing
Available globally.....



Geo-Enabled
Location Systems Services
Services **Geo AI** Machine Learning
High Fidelity 3D 3D **Enhanced Usability**
SaaS Augmented Reality Graph Databases
Kubernetes **IoT** Situational Awareness
Image Exploitation **Cloud Native**
Accessibility Volumetric Data Instant **Knowledge**
Spatiotemporal Apps **Graphs**
Microservices Indoors **BIM**
Terrain Editing Mapping **Link Analytics**
Predictive Analysis Unstructured Data Digital Twins
Developer Experience **Containerization** **Big Data**
Voice Assisted Capture **Voxels** 3D Reality Capture

... GIS continues to leverage broad technology advancements....





296° NW
Naples
FL

26°7'48" N 81°48'22" W
10 ft Elevation





Aligning Technology

Frameworks
Standards
Best Practices
Data Models
Initiatives
Vision
Global Contributions



Cadasta



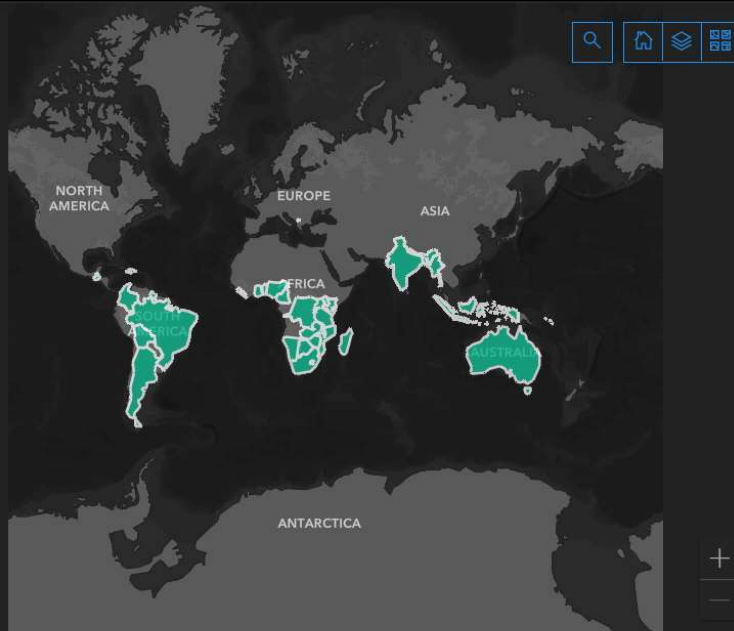
Cadasta Global Impact Dashboard - General Statistics

Month:
October

Year:
2021



Welcome to the Cadasta Impact Dashboard!



Esri, FAO, NOAA

Powered by Esri

HOUSEHOLDS



PEOPLE

5,394,094

* estimated based on number of households and an average of 6 people per household. See Notes tab for more

PARTNERS

89

PROJECTS

113

LAND DOCUMENTS ISSUED

269,106

COUNTRIES

42

PARCELS

362,183

NUMBER OF GOVERNMENTS

24

HECTARES

19,687,044

GENDER OF



COMMUNITIES

3,280

Odisha India



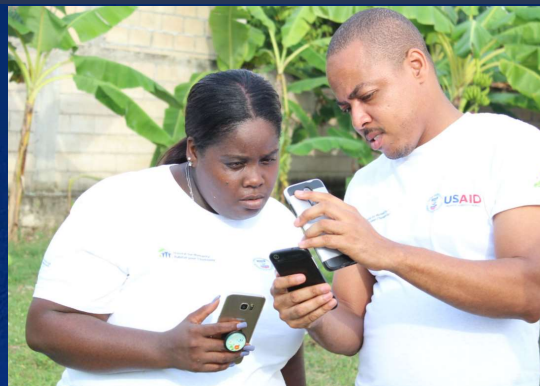
UGANDA



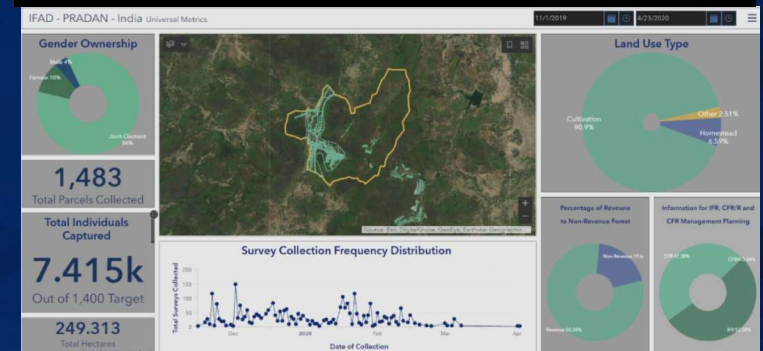
World's Largest Slum Titling Initiative Wins the UN-Habitat Award with Help from Cadasta

Pamoja Trust:
Rapid Mapping of Areas
Marked for Demolition

Leveraging Land in Haiti
Cadasta & USAID



Protecting India's Forest-dwellers'
Right to Land



<https://cadasta.org/cadasta-stories/>



Kadaster International

Post conflict areas need sustainable empowerment



Land in Peace project in Colombia



Providing security during reconstruction in Nepal



<https://www.kadaster.com/>

Colombia



<https://www.esri.com/about/newsroom/blog/how-one-million-people-in-indias-odisha-slums-gain-land-rights/>

Kenya

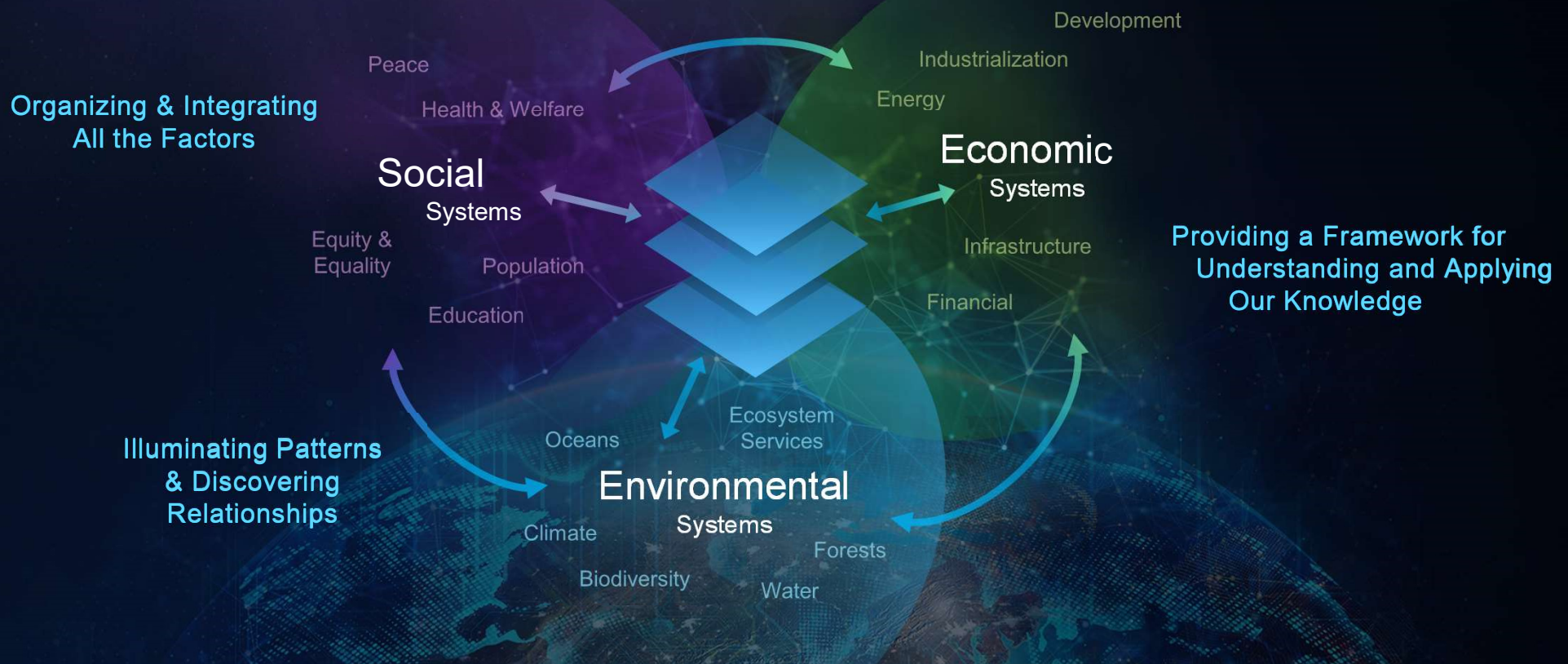


<https://www.esri.com/about/newsroom/blog/how-one-million-people-in-indias-odisha-slums-gain-land-rights/>



Sustainability Requires . . . Seeing the World as One Single Ecosystem

Geography Provides the Science & Language to Do This





esri[®]

**THE
SCIENCE
OF
WHERE**[®]

Copyright © 2021 Esri. All rights reserved.